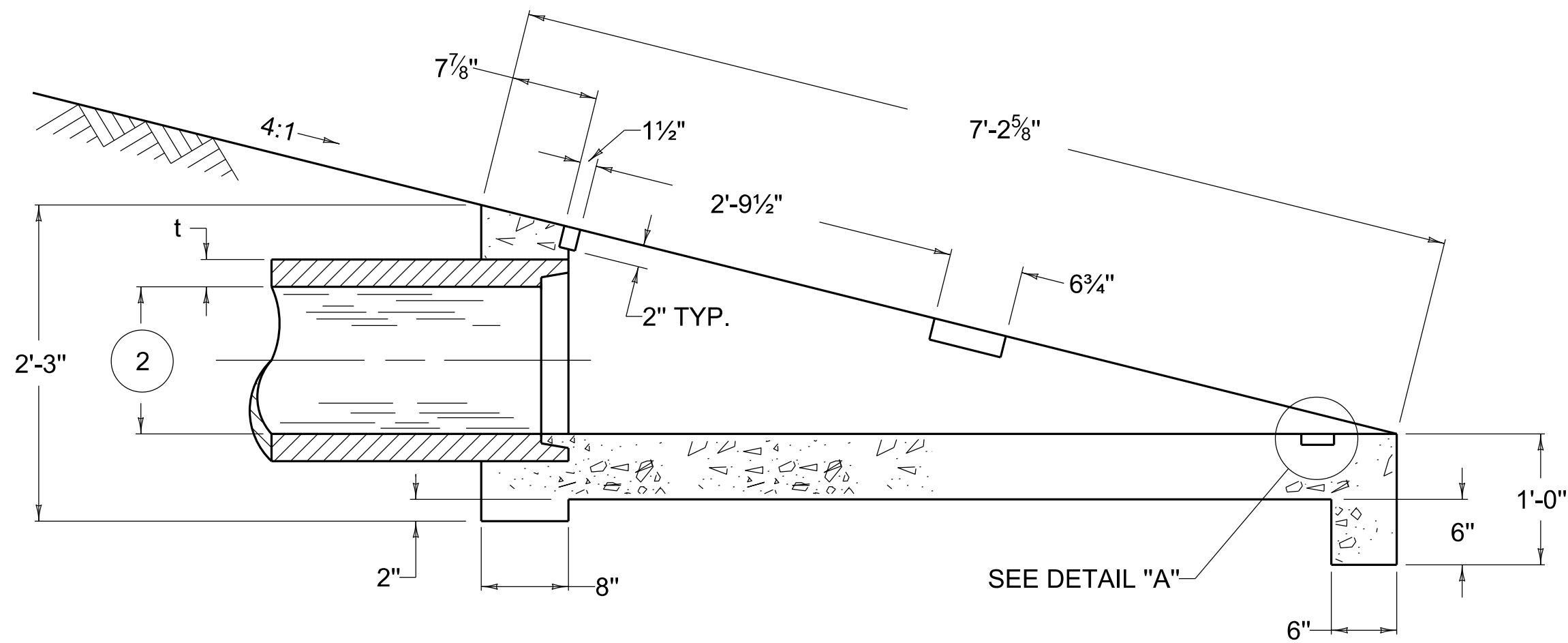
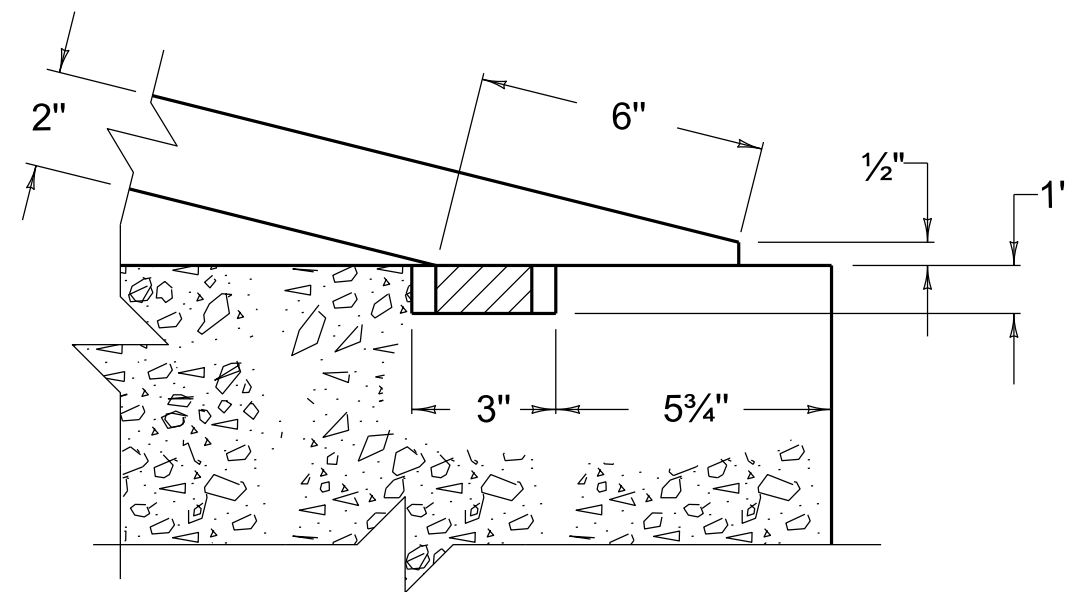


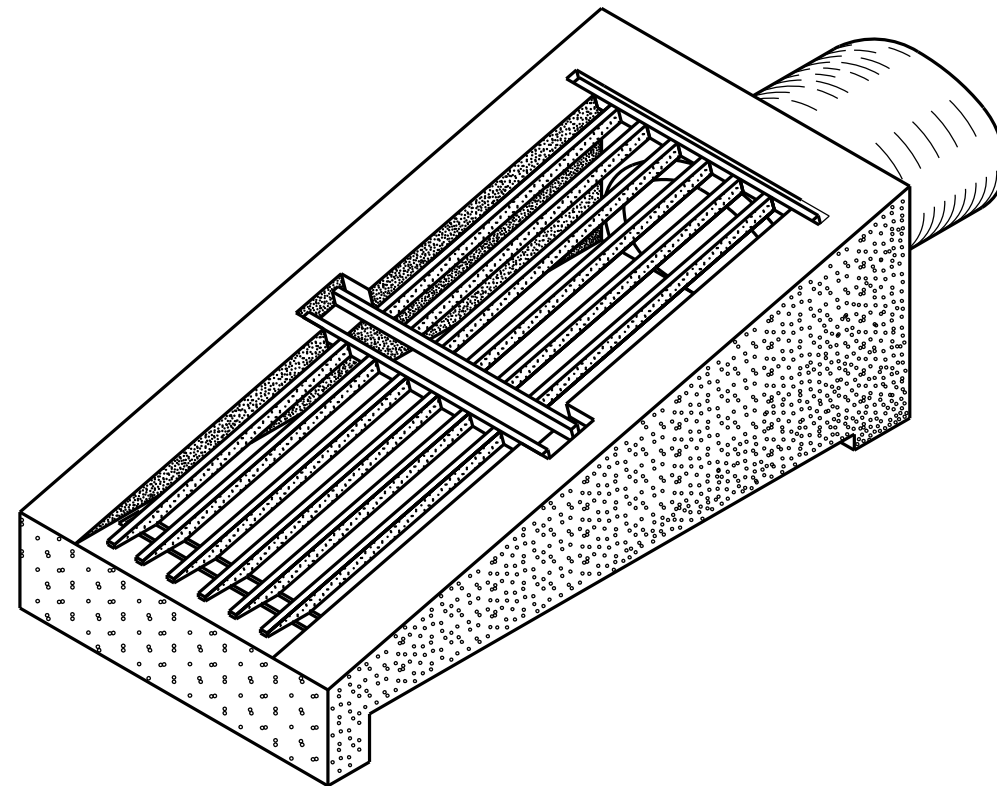
PLAN VIEW



SECTION A-A



DETAIL "A"



ISOMETRIC VIEW

~ NOTES ~

BID ITEM AND UNIT TO BID
SLOPED BOX INLET-OUTLET TYPE 1 EACH

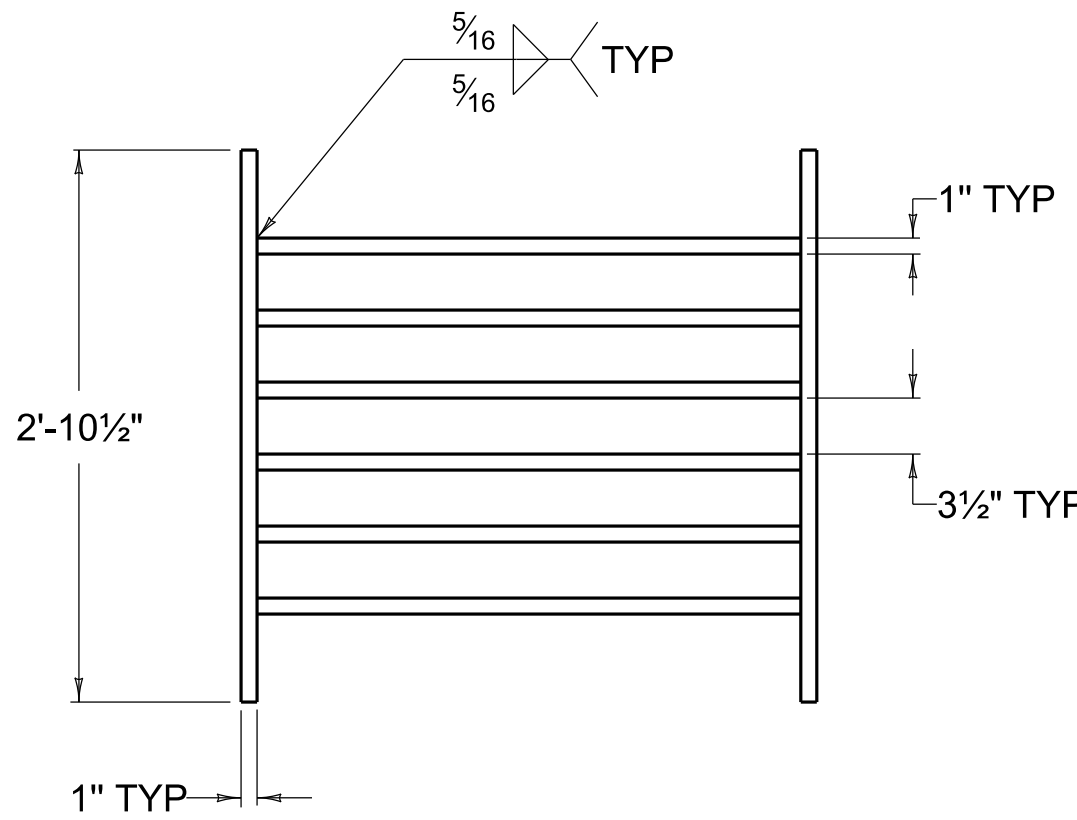
1 INTERIOR SPAN

2 INTERIOR RISE

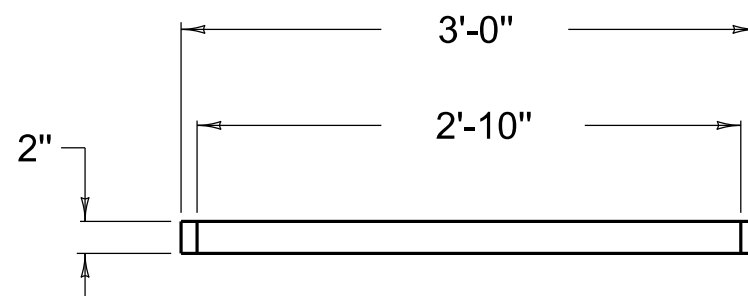
3. THE UNIT PRICE BID FOR EACH STRUCTURE SHALL INCLUDE CONCRETE, STRUCTURAL STEEL GRATINGS, EXCAVATION, LABOR AND ALL INCIDENTALS NECESSARY FOR ITS CONSTRUCTION AS DETAILED ON THIS SHEET.

4. SIZE AND LOCATION OF PIPE SHALL BE SHOWN ON PLANS.

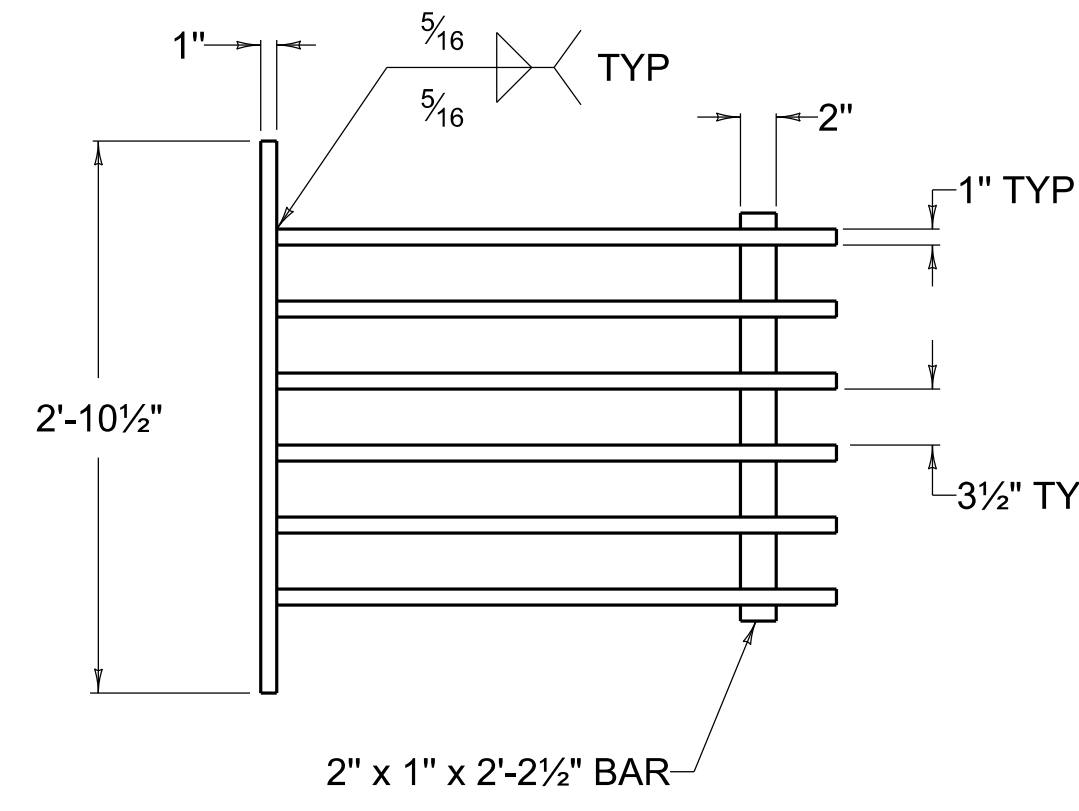
5. SLOPED BOX INLET OR OUTLET TYPE 1 IS INTENDED TO BE USED WITH THE FOLLOWING PIPE SIZES:
METAL PIPE ARCH - (15" EQUIV. ROUND)
METAL PIPE ARCH - (18" EQUIV. ROUND)
CONCRETE ELLIPTICAL PIPE - (18" EQUIV. ROUND)



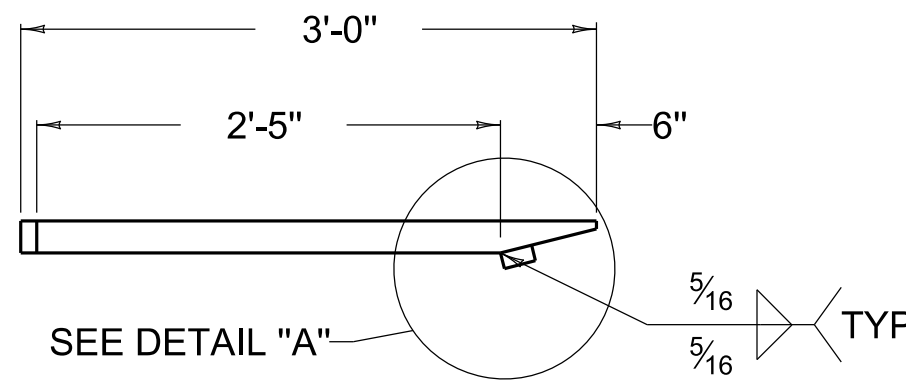
GRATE NO. 1
PLAN VIEW



GRATE NO. 1
SIDE ELEVATION



GRATE NO. 2
PLAN VIEW



GRATE NO. 2
SIDE ELEVATION

APPROXIMATE QUANTITIES			
CLASS "A" CONC.	GRATE	LBS STRUCTURAL STEEL	
CU. YDS.	NUMBER	EACH GRATE	TOTAL LBS
0.9	1	155	298
	2	143	



COMMONWEALTH OF KENTUCKY
DEPARTMENT OF HIGHWAYS



INLETS

SLOPED BOX INLET OR OUTLET TYPE 1

STANDARD DRAWING NUMBER
RDB-110-08

DRAINAGE

REVISION DATE: 12/01/2015
REVISION NUMBER: 0

SUBMITTED 12-01-2015 DATE
DIVISION DIRECTOR
APPROVED 12-01-2015 DATE
STATE HIGHWAY ENGINEER